

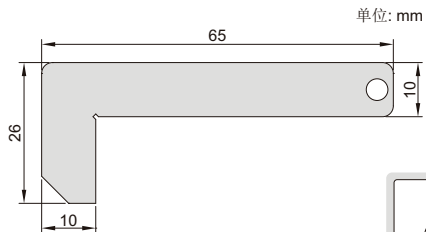
倒角规



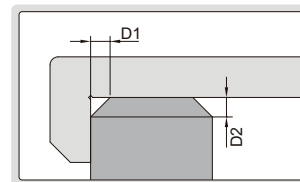
4844-1

- 符合企业标准
- 用于测量内外倒角
- 不锈钢制造

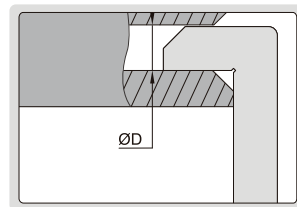
| 型号 | 分度值 | 精度 | ØD |
|--------|-------|---------|------|
| 4844-1 | 0.5mm | ±0.25mm | 11mm |



测量外倒角



测量内孔时, 内孔直径>ØD



测量内倒角

